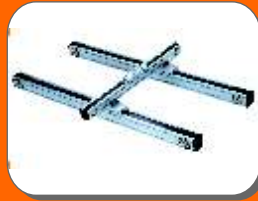




ACTUATORS, X-Y TABLE



LINEAR GUIDEWAY & LM BEARING



BALL SCREW, COUPLING, TIMING BELT & PULLEY



MOTION & CONTROL



ROTARY INDEXING TABLE



ROBOFLEX CHAIN



BEARINGS & BUSHES



AL PROFILE & ACCESSORIES



## PRECISION LOCK NUT

### YZM SERIES

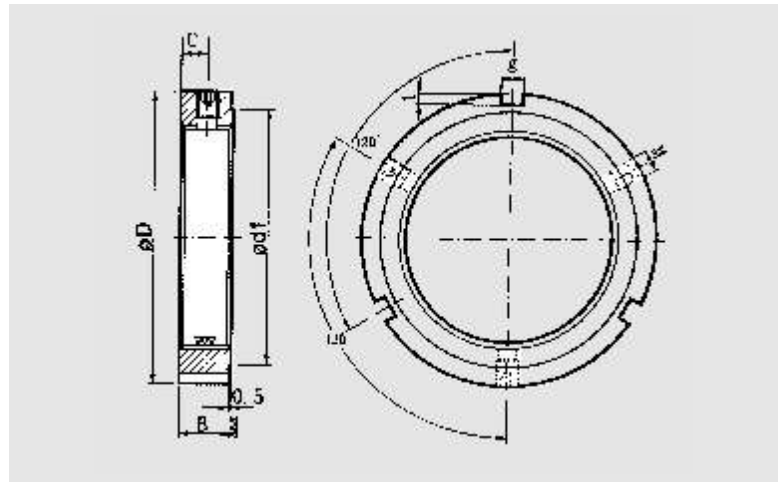


### Features

- Material : DIN C45, JIS S45C, KS SM45C
- Hardness : HRC 20~25
- Nut Grade : Precision Class
- Squareness of Nut Face :  $\perp 0.002\sim 0.015$

### Advantages

1. Three locking pins located in equal intervals enable the nut to be assembled with the shaft at an appropriate angle and adjust the deviation properly.
2. No need for a lock washer or fluting of shaft key.



### Dimensions (mm)

PART NO.	THREAD & PITCH	Dimensions								Axial Load (KN)	Set Screws (Nm)	Weight (g)
		ØD	B	g	t	Ød <sub>1</sub>	c	m				
YZM 12	M 12 x 1.0	22	8	3	3	16	4	M4	26	3.5	14	
YZM 15	M 15 x 1.0	25	8	3	3	19	4	M4	33	3.5	16	
YZM 17	M 17 x 1.0	28	10	4	3	21	5	M5	49	4.5	24	
YZM 20	M 20 x 1.0	32	10	4	3	25	5	M5	55	4.5	34	
YZM 25	M 25 x 1.5	38	12	5	3	31	6	M6	87	8	54	
YZM 30	M 30 x 1.5	45	12	5	3	38	6	M6	110	8	76	
YZM 35	M 35 x 1.5	52	12	5	3	45	6	M6	120	8	102	
YZM 40	M 40 x 1.5	58	14	6	3	50	7	M6	150	8	144	
YZM 45	M 45 x 1.5	65	14	6	3	56	7	M6	170	8	180	
YZM 50	M 50 x 1.5	70	14	6	3	61	7	M6	180	8	196	
YZM 55	M 55 x 2.0	75	16	7	4	66	8	M6	250	8	240	
YZM 60	M 60 x 2.0	80	16	7	4	70	8	M6	270	8	262	
YZM 65	M 65 x 2.0	85	16	7	4	76	8	M6	290	8	282	
YZM 70	M 70 x 2.0	92	18	8	4	82	9	M8	350	18	378	
YZM 75	M 75 x 2.0	98	18	8	4	87	9	M8	370	18	422	
YZM 80	M 80 x 2.0	105	18	8	4	92	9	M8	390	18	492	
YZM 85	M 85 x 2.0	110	18	8	4	99	9	M8	400	18	524	
YZM 90	M 90 x 2.0	120	20	10	4	105	10	M8	470	18	750	
YZM 95	M 95 x 2.0	125	20	10	4	110	10	M8	490	18	782	
YZM 100	M 100 x 2.0	130	20	10	4	116	10	M8	510	18	826	
YZM 105	M 105 x 2.0	140	22	12	5	122	11	M10	560	35	1,108	
YZM 110	M 110 x 2.0	145	22	12	5	129	11	M10	600	35	1,164	
YZM 120	M 120 x 2.0	155	24	12	5	136	12	M10	710	35	1,378	
YZM 130	M 130 x 2.0	165	24	12	5	145	12	M10	760	35	1,480	
YZM 140	M 140 x 2.0	180	26	14	6	156	13	M12	880	60	1,958	
YZM 150	M 150 x 2.0	195	26	14	6	167	13	M12	930	60	2,404	
YZM 160	M 160 x 3.0	210	28	16	7	178	14	M12	980	60	3,080	
YZM 170	M 170 x 3.0	220	28	16	7	189	14	M12	1,130	60	3,256	
YZM 180	M 180 x 3.0	230	30	18	8	199	15	M12	1,300	60	3,628	
YZM 190	M 190 x 3.0	240	30	18	8	210	15	M12	1,470	60	3,928	
YZM 200	M 200 x 3.0	250	32	18	8	222	16	M12	1,600	60	4,330	

Regd. Office : 5224, Nigam Market, G.B. Road, Delhi - 110006

Head Office : B-97/4, Naraina Industrial Area, Phase - I, New Delhi - 28 Ph.: 011 - 42709155 / 66 Fax : 011 - 45040209

Branch Office : Door No. 1/9, Rajamannar Salai, Vijayaraghavapuram, K.K. Nagar, Chennai - 600 093 Ph.: 044 - 42669808

Email : [info@pbh.in](mailto:info@pbh.in)

D-20

Website : [www.pbh.in](http://www.pbh.in)

## PRECISION LOCK NUT

### SLN SERIES

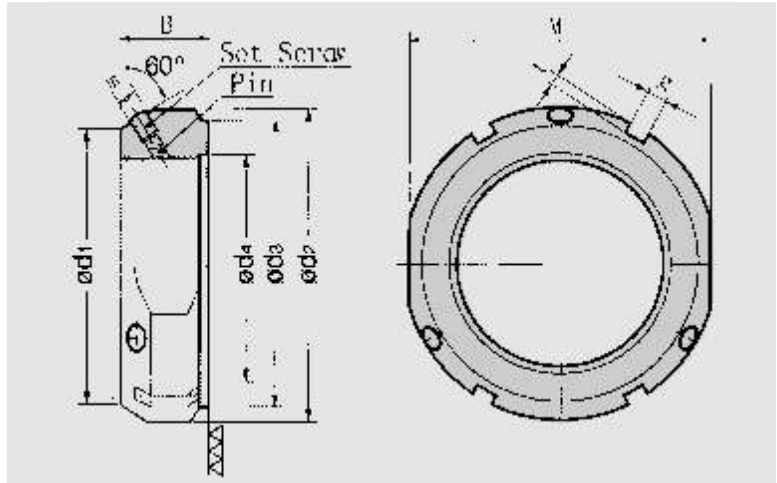


#### Features

- Material : DIN C45, JIS S45C, KS SM45C
- Hardness : HRC 20~25
- Nut Grade : Precision Class
- Squareness of Nut Face :  $\perp 0.002\sim 0.015$

#### Advantages

1. Three locking pins located in equal intervals enable the nut to be assembled with the shaft at an appropriate angle and adjust the deviation properly.
2. No need for a lock washer or fluting of shaft key.



#### Dimensions (mm)

PART NO.	THREAD & PITCH	Dimensions											Axial Load (KN)	Weight (g)
		Dimensions						Set Screws						
		Ød <sub>1</sub>	Ød <sub>2</sub>	Ød <sub>3</sub>	Ød <sub>4</sub>	B	g	t	M	m	Torque (Nm)			
SLN 02	M 15 x 1	26	33	25	16	16	4	2.5	30	M5	4.5	60	75	
SLN 03	M 17 x 1	29	37	30	18	18	5	2.5	34	M6	8	80	100	
SLN 04	M 20 x 1	32	40	32	21	18	5	2.5	36	M6	8	90	110	
SLN 05	M 25 x 1.5	36	44	36	26	20	5	2.5	41	M6	8	130	130	
SLN 06	M 30 x 1.5	41	49	41	31	20	5	2.5	46	M6	8	160	160	
SLN 07	M 35 x 1.5	46	54	46	36	22	5	2.5	50	M6	8	190	190	
SLN 08	M 40 x 1.5	56	65	56	41	22	6	3	60	M6	8	210	300	
SLN 09	M 45 x 1.5	61	70	61	47	22	6	3	65	M6	8	240	330	
SLN 10	M 50 x 1.5	65	75	65	51	25	7	3	70	M6	8	300	400	
SLN 11	M 55 x 2	74	85	75	57	25	7	3	80	M8	18	340	540	
SLN 12	M 60 x 2	78	90	79	62	26	8	4	85	M8	18	380	610	
SLN 13	M 65 x 2	83	95	84	67	28	8	4	90	M8	18	460	710	
SLN 14	M 70 x 2	88	100	89	72	28	8	4	95	M8	18	490	750	
SLN 15	M 75 x 2	93	105	94	77	28	8	4	100	M8	18	520	800	
SLN 16	M 80 x 2	98	110	96	82	32	8	4	100	M8	18	620	900	
SLN 17	M 85 x 2	107	120	106	87	32	10	4	110	M10	35	650	1,150	
SLN 18	M 90 x 2	112	125	111	92	32	10	4	115	M10	35	680	1,200	
SLN 19	M 95 x 2	117	130	116	97	32	10	4	120	M10	35	710	1,250	
SLN 20	M 100 x 2	122	135	121	102	32	10	4	125	M10	35	740	1,300	
SLN 22	M 110 x 2	132	145	130	112	32	10	4	135	M10	35	800	1,450	
SLN 24	M 120 x 2	142	155	140	122	32	10	4	145	M10	35	860	1,600	
SLN 26	M 130 x 2	152	165	150	132	32	12	5	155	M10	35	920	1,700	
SLN 28	M 140 x 2	162	175	160	142	32	14	6	165	M10	35	980	1,800	
SLN 30	M 150 x 2	172	185	170	152	32	14	6	175	M10	35	1,040	1,950	
SLN 32	M 160 x 3	182	195	180	162	32	14	6	-	M10	35	1,100	2,100	
SLN 34	M 170 x 3	192	205	190	172	32	14	6	-	M10	35	1,160	2,200	
SLN 36	M 180 x 3	202	215	200	182	32	16	7	-	M10	35	1,220	2,300	
SLN 38	M 190 x 3	212	225	210	192	32	16	7	-	M10	35	1,280	2,400	
SLN 40	M 200 x 3	222	235	220	202	32	18	8	-	M10	35	1,340	2,500	

## PRECISION LOCK NUT

### SWLN SERIES

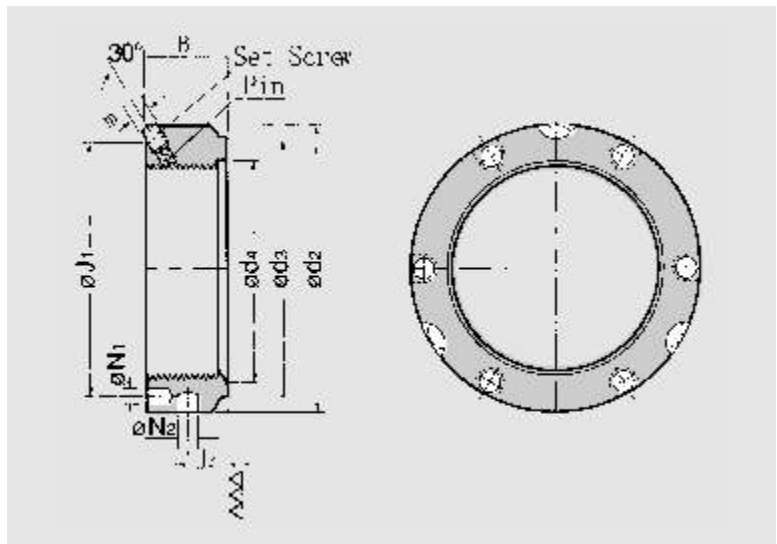


#### Features

- Material : DIN C45, JIS S45C, KS SM45C
- Hardness : HRC 20~25
- Nut Grade : Precision Class
- Squareness of Nut Face :  $\perp 0.002\sim 0.015$

#### Advantages

1. Able to adjust deviation by erecting a nut with locking pins located at three equal intervals.
2. No need for a lock washer or fluting of shaft key.

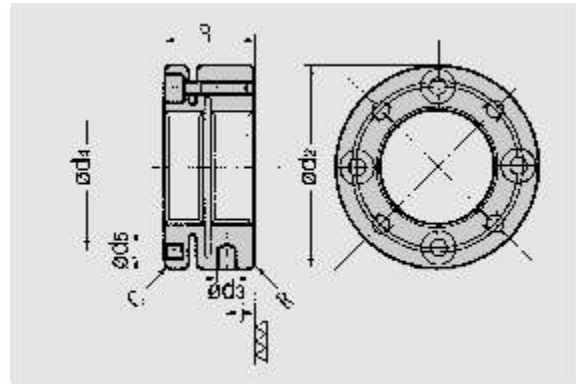
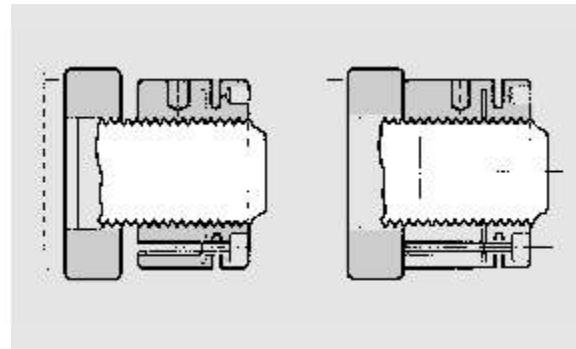


#### Dimensions (mm)

PART NO.	THREAD & PITCH	Dimensions											Axial Load (KN)	Weight (g)
		Dimensions										Set Screws		
		Ød <sub>2</sub>	Ød <sub>3</sub>	Ød <sub>4</sub>	B	ØJ <sub>1</sub>	J <sub>2</sub>	ØN <sub>1</sub>	ØN <sub>2</sub>	m	Torque (Nm)			
SWLN04	M 20 x 1.0	38	30	21	18	29	10	4.3	4	M6	8	110	100	
SWLN05	M 25 x 1.5	42	35	26	20	32.5	11	4.3	4	M6	8	130	120	
SWLN06	M 30 x 1.5	48	40	31	20	40.5	11	4.3	5	M6	8	160	150	
SWLN07	M 35 x 1.5	53	47	36	20	45.5	11	4.3	5	M6	8	190	180	
SWLN08	M 40 x 1.5	58	52	41	22	50.5	12	4.3	5	M6	8	210	210	
SWLN09	M 45 x 1.5	68	58	46	22	58	12	4.3	6	M6	8	240	300	
SWLN10	M 50 x 1.5	70	63	51	24	61.5	13	4.3	6	M6	8	300	310	
SWLN11	M 55 x 1.5	75	70	57	24	66.5	13	4.3	6	M6	8	340	350	
SWLN12	M 60 x 1.5	84	75	62	24	74.5	13	5.3	6	M6	8	380	450	
SWLN13	M 65 x 1.5	88	80	67	25	78.5	13	5.3	6	M6	8	460	480	
SWLN14	M 70 x 1.5	95	86	72	26	85	14	5.3	8	M8	18	490	570	
SWLN15	M 75 x 1.5	100	91	77	26	88	13	6.4	8	M8	18	520	610	
SWLN16	M 80 x 2	110	97	82	30	95	16	6.4	8	M8	18	620	910	
SWLN17	M 85 x 2	115	102	87	32	100	17	6.4	8	M10	35	650	1,050	
SWLN18	M 90 x 2	120	110	92	32	108	17	6.4	8	M10	35	680	1,100	
SWLN19	M 95 x 2	125	114	97	32	113	17	6.4	8	M10	35	710	1,150	
SWLN20	M 100 x 2	130	120	102	32	118	17	6.4	8	M10	35	740	1,200	
SWLN22	M 110 x 2	140	132	112	32	128	17	6.4	8	M10	35	800	1,350	
SWLN24	M 120 x 2	155	142	122	32	140	17	6.4	8	M10	35	860	1,700	
SWLN26	M 130 x 3	165	156	132	32	153	17	6.4	8	M10	35	920	1,900	
SWLN28	M 140 x 3	180	166	142	32	165	17	6.4	10	M10	35	980	2,250	
SWLN30	M 150 x 3	190	180	152	32	175	17	6.4	10	M10	35	1,040	2,450	
SWLN32	M 160 x 3	205	190	162	32	185	17	8.4	10	M10	35	1,100	2,900	
SWLN34	M 170 x 3	215	205	172	32	195	17	8.4	10	M10	35	1,160	3,150	
SWLN36	M 180 x 3	230	215	182	32	210	17	8.4	10	M10	35	1,220	3,650	
SWLN38	M 190 x 3	240	225	192	32	224	17	8.4	10	M10	35	1,280	3,850	
SWLN40	M 200 x 3	245	237	202	32	229	17	8.4	10	M10	35	1,340	3,700	

## PRECISION LOCK NUT

### YAN SERIES



### Features

- Material : DIN C45, JIS S45C, KS SM45C
- Hardness : HRC 20~25
- Nut Grade : Precision Class
- Squareness of Nut Face :  $\perp$  0.002~0.015

### Advantages

1. Preload and tension can be adjusted.
2. Tolerable with vibration (shake, oscilation)
3. Locking washers, slot in the shaft are not needed.

### Dimensions (mm)

PART NO.	Dimensions						Holes	Tight bolt			Release Torque (kgf-cm)	Allowable Axial Load (kgf-m)	Weight (g)
	Ød2	Ød3	Ød4	Ød5	B	i		Thread & Length	Bolts	Torque (kgf.m)			
YAN 16 x 1.5	34	4	24.5	4.3	18	4.5	4	M4 x 12	4	0.29	340	22	80
YAN 18 x 1.5	36	4	26.5	4.3	18	4.5	4	M4 x 12	4	0.29	370	24	87
YAN 20 x 1.5	40	4	30.5	4.3	18	4.5	4	M4 x 12	4	0.29	400	27	107
YAN 22 x 1.5	40	4	30.5	4.3	18	4.5	4	M4 x 12	4	0.29	420	30	100
YAN 24 x 1.5	42	4	32.5	4.3	18	4.5	4	M4 x 12	4	0.29	440	33	107
YAN 25 x 1.5	45	5	36.5	4.3	20	6.0	4	M4 x 12	4	0.29	450	45	137
YAN 28 x 1.5	46	5	38.5	4.3	20	6.0	4	M4 x 12	4	0.29	480	50	136
YAN 30 x 1.5	48	5	40.5	4.3	20	6.0	4	M4 x 12	4	0.29	500	55	141
YAN 32 x 1.5	50	5	42.5	4.3	22	7	4	M4 x 16	4	0.29	520	61	163
YAN 35 x 1.5	53	5	45.5	4.3	22	7	4	M4 x 16	4	0.29	550	62	175
YAN 38 x 1.5	58	5	48.5	4.3	22	7	4	M4 x 16	4	0.29	580	72	212
YAN 40 x 1.5	58	5	50.5	4.3	22	7	4	M4 x 16	4	0.29	600	63	195
YAN 42 x 1.5	60	5	52.5	4.3	22	7	4	M4 x 16	4	0.29	620	63	204
YAN 45 x 1.5	68	6	58	4.3	22	6.0	6	M4 x 16	6	0.29	1,070	80	288
YAN 48 x 1.5	68	6	59.5	4.3	25	9	6	M4 x 18	6	0.29	1,180	90	294
YAN 50 x 1.5	70	6	61.5	4.3	25	9	6	M4 x 18	6	0.29	1,250	90	303
YAN 52 x 1.5	72	6	63.5	4.3	25	9	6	M4 x 18	6	0.29	1,300	90	314
YAN 55 x 1.5	75	6	66.5	4.3	25	9	6	M4 x 18	6	0.29	1,410	90	327
YAN 58 x 1.5	82	6	72.5	5.3	26	9	6	M5 x 18	6	0.6	2,100	158	446
YAN 60 x 1.5	84	6	74.5	5.3	26	9	6	M5 x 18	6	0.6	2,200	159	479
YAN 62 x 1.5	86	6	76.5	5.3	28	10.5	6	M5 x 20	6	0.6	2,310	180	505
YAN 65 x 1.5	88	6	78.5	5.3	28	10.5	6	M5 x 20	6	0.6	2,470	170	500
YAN 68 x 1.5	95	8	83	5.3	28	9.5	6	M5 x 20	6	0.6	2,620	215	625
YAN 70 x 1.5	95	8	85	5.3	28	9.5	6	M5 x 20	6	0.6	2,730	200	536
YAN 72 x 1.5	98	8	86	6.4	28	8.5	6	M6 x 20	6	1.0	3,640	158	626
YAN 75 x 1.5	100	8	88	6.4	28	8.5	6	M6 x 20	6	1.0	3,750	200	623
YAN 80 x 2.0	110	8	95	6.4	32	11	6	M6 x 22	6	1.0	3,900	169	890
YAN 85 x 2.0	115	8	100	6.4	32	11	6	M6 x 22	6	1.0	4,000	167	963
YAN 90 x 2.0	120	8	108	6.4	32	11	6	M6 x 22	6	1.0	4,200	255	1,020
YAN 95 x 2.0	125	8	113	6.4	32	11	6	M6 x 22	6	1.0	4,350	262	1,050
YAN 100 x 2.0	130	8	118	6.4	32	11	6	M6 x 22	6	1.0	4,500	268	1,100
YAN 105 x 2.0	135	8	123	6.4	32	11	6	M6 x 22	6	1.0	4,650	270	1,150
YAN 110 x 2.0	140	8	128	6.4	32	11	6	M6 x 22	6	1.0	4,800	280	1,210
YAN 115 x 2.0	145	8	133	6.4	36	13	6	M6 x 25	6	1.0	4,950	325	1,430
YAN 120 x 2.0	155	8	140	6.4	36	13	6	M6 x 25	6	1.0	5,100	403	1,740
YAN 125 x 2.0	160	8	148	6.4	36	13	6	M6 x 25	6	1.0	5,250	410	1,820
YAN 130 x 3.0	165	8	153	6.4	36	13	6	M6 x 25	6	1.0	5,450	400	1,940
YAN 140 x 3.0	180	10	165	6.4	36	12	8	M6 x 25	8	1.0	5,700	472	2,335
YAN 150 x 3.0	190	10	175	6.4	36	12	8	M6 x 25	8	1.0	6,000	485	2,480
YAN 160 x 3.0	205	10	185	8.4	40	14	8	M8 x 30	8	2.5	6,300	550	3,380
YAN 170 x 3.0	215	10	195	8.4	40	14	8	M8 x 30	8	2.5	6,650	555	3,580
YAN 180 x 3.0	230	10	210	8.4	40	14	8	M8 x 30	8	2.5	7,000	640	4,110
YAN 190 x 3.0	240	10	224	8.4	40	14	8	M8 x 30	8	2.5	7,300	650	4,330
YAN 200 x 3.0	245	10	229	8.4	40	14	8	M8 x 30	8	2.5	7,600	570	4,410

Regd. Office : 5224, Nigam Market, G.B. Road, Delhi - 110006

Head Office : B-97/4, Naraina Industrial Area, Phase - I, New Delhi - 28 Ph.: 011 - 42709155 / 66 Fax : 011 - 45040209

Branch Office : Door No. 1/9, Rajamannar Salai, Vijayaraghavapuram, K.K. Nagar, Chennai - 600 093 Ph.: 044 - 42669808

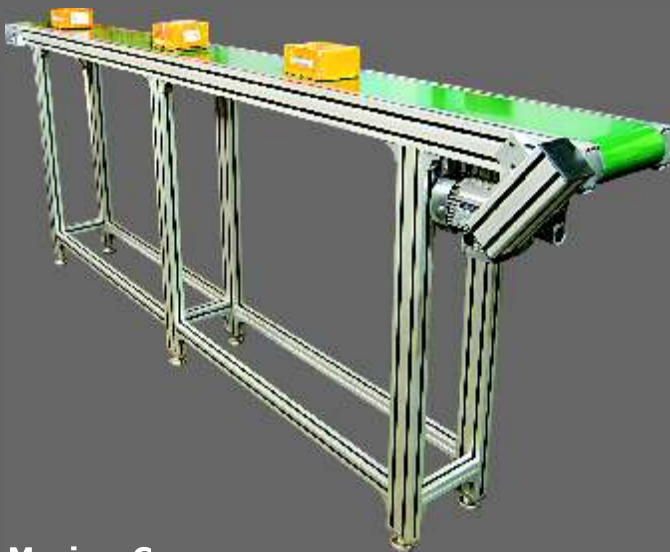
Email : info@pbh.in

D-23

Website : www.pbh.in

## SOLUTIONS FOR INDUSTRIAL AUTOMATION

- Linear Guides
- Ball Screw & Lead Screw
- Ball Screw Support Unit
- Coupling
- Linear Motion Bearing
- Shafts (Hardened & Ground)
- Pillow Block Bearing Unit
- Precision Lock Nut & Power Lock
- Timing Belt & Pulley
- Actuators, X-Y Tables
- Maxima Work Table & Conveyor
- Stepper Motors, Drivers
- AC Servo Motors & Drive
- Motion & Controllers
- Rotary Indexing Tables
- Cable Drag Chain (Robochain)
- Aluminium Profile & Accessories
- Leveling Foot Mount & Autocaster



Maxima Conveyor



Maxima Work Table