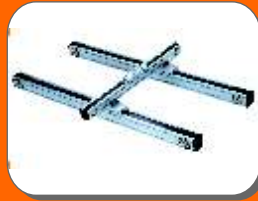




ACTUATORS, X-Y TABLE



LINEAR GUIDEWAY & LM BEARING



BALL SCREW, COUPLING, TIMING BELT & PULLEY



MOTION & CONTROL



ROTARY INDEXING TABLE



ROBOFLEX CHAIN



BEARINGS & BUSHES



AL PROFILE & ACCESSORIES



## BUSHES

BUSHES SELF LUBRICATING /  
BORDER LUBRICATING /SOLID LUBRICATING

### PAP PAF PAW Self-Lubricating Bearing



This product takes the steel plate as the base . and with the sintering of bronze powder in the middle layer and rolling of the mixture of PTEE and Pb at it's surface. It has the characteristic of small rubbing coefficient, wear-resisting and corrode resisting. Long life. The adoption of this product can reduce the cost of machine, reducing noises and negligible"stick-slip". It is widely used in printing machine, wearing machine, motorcycles and etc.

		Static Load 250N/mm <sup>2</sup>
Max Load		Low Speed Load 120N/mm <sup>2</sup>
		Rotating & Oscillating Load 60N/mm <sup>2</sup>
Max Speed	5 m/s	
Friction Coefficient	0.03~0.20	
Wear Depth Limit	0.05 mm	
Max PV Value		Dry Lubricating 3.6N/mm <sup>2</sup> ; m/s
		Oil Lubricating 50N/mm <sup>2</sup> ; m/s
Temperature Range	-195°C~+280°C	

### OB OBF Inlaid Solid Lubricating Bearing



This product base on alloy of bronze of special formula. The solid lubricating medium is inlaid in the friction surface and the friction area of the solid lubricating medium take over 20%. The combination of advantages of alloy of bronze and non-metal Friction reducing matercing has broken in the limit of general that depend on oil film. It was widely used in metallurgy, stell rolles in metallography, mineral machines, ships gas turbine and etc.

Max Load		Static Load 150N/mm <sup>2</sup>
		Dynamic Load 100N/mm <sup>2</sup>
Max Speed		Dry Lubricating 0.4m/s
		Oil Lubricating 1.5m/s
Max PV Value		Dry Lubricating 3.3N/mm <sup>2</sup> ; m/s
Friction Coefficient	0.05~0.20	
Temperature Range	-100°C~+300°C	
Brinnal Composition	HBsC4	
Brinnal Hardness	>HB200	

## BUSHES

### THE INSTALLATION OF THE SLIDING BUSHING AND THE HOUSING

#### The Installation of SF Bush

SF bushes should be cleaned in kerosene or diesel oil first, immersed in engine oil and then dried up. When the bush is installed into housing, make sure the bush not rotating in the housing or moving in the axial direction and at the same time make the outer surface surface fully contact to the base hole, generally guarantee the contact area over 70% thus to improve load capacity and transmission of friction heat. The inner surface of SF bush is made of self-lubricating plastic, the outer surface steel backing, The friction coefficient of steel to steel is bigger that of steel to plastic, So we should choose the light-graded tight fit, preventing the axle sleeve from moving in the base when working, and also preventing the inner holes from getting deformed and too big because of the large tight fit of the outer diameter.

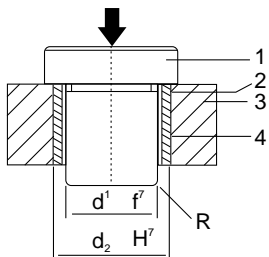
Out Circle of the axle sleeve should be avoided in the high-pressure working conditions. Two methods are recommended here:

1. Increase the outer diameter of the axle sleeve, and the deformation of inner holes can be calibrated with calibrating core stick.

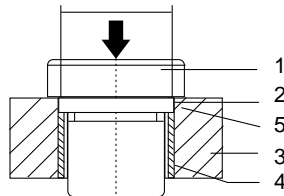
2. When installing, apply ZY 801 Oxygen-hatred glue in the housing to strengthen the combination strength between the axle sleeve and base hole.

For bush (outer diameter < 55mm), press the bush into the housing gently and carefully using a core axle with a handle. Fig A.

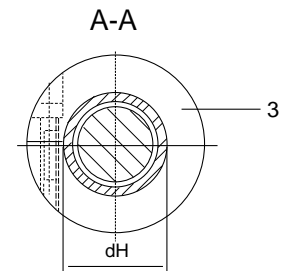
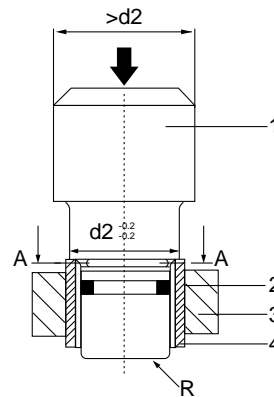
For bush (outer diameter > 55mm), press the bush into the housing gently and carefully using a handle with a shoulder, an "O" ring and an assisting circle. Fig. B



(Fig Aa) Plane Installation



(B) Inset Installation



d2	dH
> 55 100	d2 <sup>+0.28</sup> d2 <sup>+0.25</sup>
> 100 200	d2 <sup>+0.40</sup> d2 <sup>+0.36</sup>
> 200 305	d2 <sup>+0.50</sup> d2 <sup>+0.40</sup>

1. Press the core axle into bushing
2. Housing chamfer at end : 0.8 x 15°
3. HOUSing
4. Diameter of inset shoulder
- R. Radius of the round angle of the core axle end



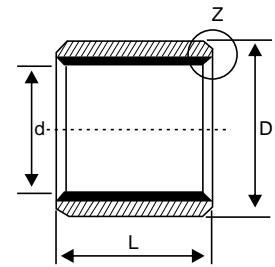
# PRECISION BEARING HOUSE

## DU BUSHES

### BUSHES SELF LUBRICATING

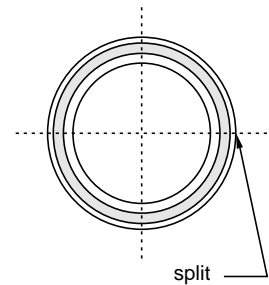
PAP / MB / DU

d	D	L <sub>-0.3</sub> <sup>0</sup>												Unit :mm		
		3	4	5	6	8	10	12	15	20	25	30	40		50	
3	4.5	0303	0304		0306											
4	5.5		0404	0405	0406		0410									
5	7			0505		0508	0510									
6	8		0604		0606	0608	0610	0612								
8	10				0806	0808	0810	0812	0815							
10	12				1006	1008	1010	1012	1015	1020						
12	14				1206	1208	1210	1212	1215	1220	1225					
13	15						1310		1315	1320						
14	16						1410	1412	1415	1420	1425					
15	17						1510	1512	1515	1520	1525					
16	18						1610	1612	1615	1620	1625					
17	19						1710	1712	1715	1720	1725					
18	20						1810	1812	1815	1820	1825					
20	23						2010	2012	2015	2020	2025	2030				
22	25						2210	2212	2215	2220	2225	2230				
24	27								2415	2420	2425	2430				
25	28						2510	2512	2515	2520	2525	2530	2540	2550		
28	32								2815	2820	2825	2830	2840			
30	34							3012	3015	3020	3025	3030	3040	3050		
32	36								3215	3220		3230	3240			
35	39							3512	3515	3520	3525	3530	3540	3550		
38	42								3815	3820		3830	3840			
40	44							4012		4020	4025	4030	4040	4050		



**NOTE :** How to order : select inner dia d1 from table, outer dia D & the length L required  
E.g id 10mm od 12mm length 15mm order code will be PAP 1015

d	D	L <sub>-0.3</sub> <sup>0</sup>									Unit :mm	
		20	25	30	40	50	60	70	80	100		
45	50	4520	4525	4530	4540	4550						
50	55	5020		5030	5040	5050	5060					
55	60			5530	5540	5550	5560					
60	65			6030	6040	6050	6060	6070				
65	70			6530	6540	6550	6560	6570				
70	75				7040	7050	7060	7050	7080			
75	80			7530	7540	7550	7560	7570	7580			
80	85				8040	8050	8060	8070	8080	80100		
85	90				8540		8560		8580	85100		
90	95				9040	9050	9060		9080	90100		
95	100					9550	9560		9580	95100		
100	105					10050	10060		10080			
105	110						10560		10580			
110	115						11060		11080			
115	120					15050	11560					
120	125						12060		12080	120100		
125	130						12560			125100		
130	135						13060		13080	130100		
140	145						14060		14080	140100		
150	155						15060		15080	150100		
160	165						16060		16080	160100		
180	185								18080	180100		
190	195								19080	190100		
200	205						20060		20080	200100		
220	225								22080	220100		
250	255								25080	250100		
260	265								26080	260100		
280	285								28080	280100		
300	305								30080	300100		



Regd. Office : 5224, Nigam Market, G.B. Road, Delhi - 110006

Head Office : B-97/4, Naraina Industrial Area, Phase - I, New Delhi - 28 Ph.: 011 - 42709155 / 66 Fax : 011 - 45040209

Branch Office : Door No. 1/9, Rajamannar Salai, Vijayaraghavapuram, K.K. Nagar, Chennai - 600 093 Ph.: 044 - 42669808

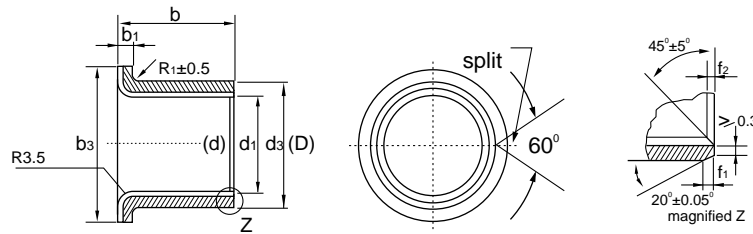
Email : info@pbh.in

E-9

Website : www.pbh.in

## DU BUSH

### PAF/FMB/DUF FLANGED BUSHES

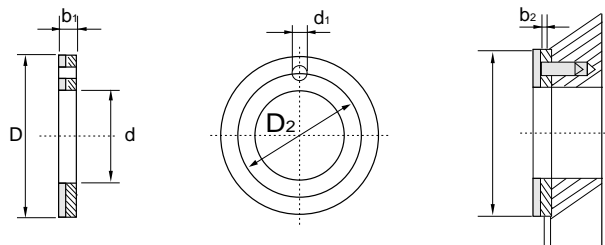


Unit : mm

d1	D	d3 (±0.4)	b1	b2	diameter of axle	Housing broe	b <sup>0</sup> <sub>0.30</sub>												
							6	8	10	12	15	20	25	30	40	50			
6	8	12	1 <sup>0</sup> <sub>-0.020</sub>	1 <sup>0</sup> <sub>-0.03</sub>	6 <sup>-0.010</sup> <sub>-0.022</sub>	8 <sup>+0.015</sup> <sub>0</sub>	0606	0608	0610										
8	10	15	1 <sup>0</sup> <sub>-0.020</sub>	1 <sup>0</sup> <sub>-0.03</sub>	8 <sup>-0.013</sup> <sub>-0.028</sub>	10 <sup>+0.015</sup> <sub>0</sub>	0806	0808	0810	0812									
10	12	18	1 <sup>0</sup> <sub>-0.020</sub>	1 <sup>0</sup> <sub>-0.03</sub>	10 <sup>-0.013</sup> <sub>-0.028</sub>	12 <sup>0</sup> <sub>0</sub>	1006	1008	1010	1012	1015								
12	14	20	1 <sup>0</sup> <sub>-0.020</sub>	1 <sup>0</sup> <sub>-0.03</sub>	12 <sup>-0.016</sup> <sub>-0.034</sub>	14 <sup>+0.018</sup> <sub>0</sub>	1206	1208	1210	1212	1215								
14	16	22	1.5 <sup>0</sup> <sub>-0.020</sub>	1.5 <sup>0</sup> <sub>-0.03</sub>	14 <sup>-0.016</sup> <sub>-0.034</sub>	16 <sup>+0.018</sup> <sub>0</sub>			1410	1412	1415	1420							
15	17	23	1.5 <sup>0</sup> <sub>-0.020</sub>	1.5 <sup>0</sup> <sub>-0.03</sub>	15 <sup>-0.016</sup> <sub>-0.034</sub>	17 <sup>+0.018</sup> <sub>0</sub>			1510	1512	1515	1520	1525						
16	18	24	1.5 <sup>0</sup> <sub>-0.020</sub>	1.5 <sup>0</sup> <sub>-0.03</sub>	16 <sup>-0.016</sup> <sub>-0.034</sub>	18 <sup>0</sup> <sub>0</sub>			1610	1612	1615	1620	1625						
18	20	26	1.5 <sup>0</sup> <sub>-0.020</sub>	1.5 <sup>0</sup> <sub>-0.03</sub>	18 <sup>-0.016</sup> <sub>-0.034</sub>	20 <sup>+0.021</sup> <sub>0</sub>				1812	1815	1820	1825						
20	23	31	1.5 <sup>0</sup> <sub>-0.020</sub>	1.5 <sup>0</sup> <sub>-0.03</sub>	20 <sup>-0.020</sup> <sub>-0.041</sub>	23 <sup>+0.021</sup> <sub>0</sub>				2012	2015	2020	2025	2030					
22	25	33	1.5 <sup>0</sup> <sub>-0.020</sub>	1.5 <sup>0</sup> <sub>-0.03</sub>	22 <sup>-0.020</sup> <sub>-0.041</sub>	25 <sup>+0.021</sup> <sub>0</sub>				2212	2215	2220	2225						
24	27	35	1.5 <sup>0</sup> <sub>-0.020</sub>	1.5 <sup>0</sup> <sub>-0.03</sub>	24 <sup>-0.020</sup> <sub>-0.041</sub>	27 <sup>+0.021</sup> <sub>0</sub>				2412	2415	2420	2425	2430					
25	28	36	1.5 <sup>0</sup> <sub>-0.020</sub>	1.5 <sup>0</sup> <sub>-0.03</sub>	25 <sup>-0.020</sup> <sub>-0.041</sub>	28 <sup>0</sup> <sub>0</sub>				2512	2515	2520	2525	3530					
28	32	40	2.0 <sup>0</sup> <sub>-0.020</sub>	2.0 <sup>0</sup> <sub>-0.035</sub>	28 <sup>-0.020</sup> <sub>-0.041</sub>	32 <sup>+0.025</sup> <sub>0</sub>					2815	2820	2825	2830					
30	34	42	2.0 <sup>0</sup> <sub>-0.020</sub>	2.0 <sup>0</sup> <sub>-0.035</sub>	30 <sup>-0.020</sup> <sub>-0.041</sub>	34 <sup>+0.025</sup> <sub>0</sub>					3015	3020	3025	3030					
32	36	46	2.0 <sup>0</sup> <sub>-0.020</sub>	2.0 <sup>0</sup> <sub>-0.035</sub>	32 <sup>-0.025</sup> <sub>-0.050</sub>	36 <sup>+0.025</sup> <sub>0</sub>					3215	3220		3230					
35	39	49	2.0 <sup>0</sup> <sub>-0.020</sub>	2.0 <sup>0</sup> <sub>-0.035</sub>	35 <sup>-0.025</sup> <sub>-0.050</sub>	39 <sup>+0.025</sup> <sub>0</sub>					3515	3520	3525	3530					
38	42	52	2.0 <sup>0</sup> <sub>-0.020</sub>	2.0 <sup>0</sup> <sub>-0.035</sub>	38 <sup>-0.025</sup> <sub>-0.050</sub>	42 <sup>0</sup> <sub>0</sub>						3820		3830					
40	44	54	2.0 <sup>0</sup> <sub>-0.020</sub>	2.0 <sup>0</sup> <sub>-0.035</sub>	40 <sup>-0.025</sup> <sub>-0.050</sub>	44 <sup>+0.025</sup> <sub>0</sub>						4020	4020	4030					

**NOTE :** How to order : select inner dia d1 from table, outer dia D & the length required b. E.g id 10mm od 12mm length 15mm order code will be PAF 1015

### PAW/WC/ WASHER BUSHES



Unit: mm

Designation	Size of washer				Size of Installation			Axle diameter
	d <sup>+0.25</sup> <sub>0</sub>	D <sup>0</sup> <sub>-0.25</sub>	b <sup>0</sup> <sub>1-0.05</sub>	D2 <sup>±0.15</sup> <sub>2-</sub>	d <sup>+0.40</sup> <sub>1+0.10</sub>	b <sub>2±0.2</sub>	D <sup>+0.25</sup> <sub>1 0</sub>	
PAW10	10	20	1.5	15	1.5	1	20	8
PAW12	12	24	1.5	18	1.5	1	24	10
PAW14	14	26	1.5	20	2	1	26	12
PAW16	16	30	1.5	22	2	1	30	14
PAW18	18	32	1.5	25	2	1	32	16
PAW20	20	36	1.5	28	3	1	36	18
PAW22	22	38	1.5	30	3	1	38	20
PAW24	24	42	1.5	33	3	1	42	22
PAW26	26	44	1.5	35	3	1	44	24
PAW28	28	48	1.5	38	4	1	48	25
PAW32	32	54	1.5	43	4	1	54	30
PAW38	38	62	1.5	50	4	1	62	35
PAW42	42	66	1.5	54	4	1	66	40
PAW48	48	74	2	61	4	1.5	74	45
PAW52	52	78	2	65	4	1.5	78	50
PAW62	62	80	2	76	4	1.5	90	60

Regd. Office : 5224, Nigam Market, G.B. Road, Delhi - 110006

Head Office : B-97/4, Naraina Industrial Area, Phase - I, New Delhi - 28 Ph.: 011 - 42709155 / 66 Fax : 011 - 45040209

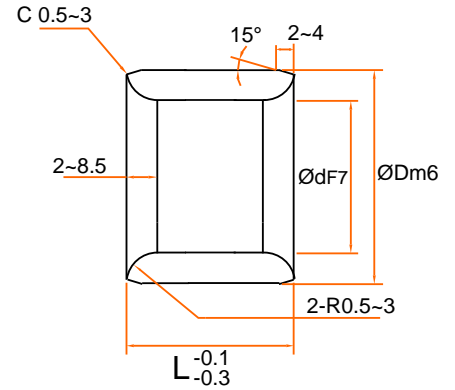
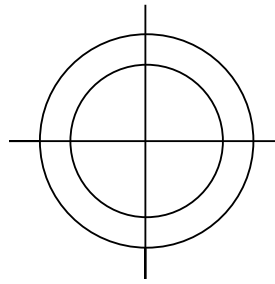
Branch Office : Door No. 1/9, Rajamannar Salai, Vijayaraghavapuram, K.K. Nagar, Chennai - 600 093 Ph.: 044 - 42669808

Email : info@pbh.in

Website : www.pbh.in

## OIL LESS BUSH

### OB SERIES



Code	d	D	L	F7	m6
OB	8	12	8	+0.028 +0.013	+0.018 +0.007
			10		
			12		
			15		
	10	14	8		
			10		
			12		
			15		
			20		
	12	18	10	+0.034 +0.016	
			12		
			15		
			16		
			20		
			25		
			30		
	13	19	10		
			15		
			16		
			20		
14	20	10	+0.021 +0.008		
		12			
		15			
		20			
		25			
		30			
		15		21	10

Code	d	D	L	F7	m6	
OB	15	12	12	+0.034 +0.016	+0.021 +0.008	
			15			
			16			
			20			
			25			
	16	22	30			
			10			
			12			
			15			
			16			
			19			
			20			
	18	24	25			
			30			
			35			
			40			
			12			+0.041 +0.020
			15			
			16			
	20					
25						
35						
40						
19	26	20				
20	28	10				
		12				

Regd. Office : 5224, Nigam Market, G.B. Road, Delhi - 110006

Head Office : B-97/4, Naraina Industrial Area, Phase - I, New Delhi - 28 Ph.: 011 - 42709155 / 66 Fax : 011 - 45040209

Branch Office : Door No. 1/9, Rajamannar Salai, Vijayaraghavapuram, K.K. Nagar, Chennai - 600 093 Ph.: 044 - 42669808

Email : info@pbh.in

E-11

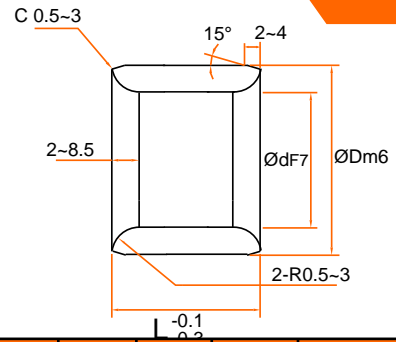
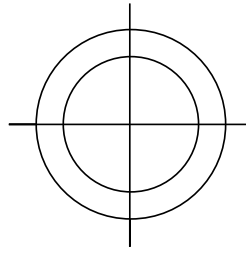
Website : www.pbh.in

# PRECISION BEARING HOUSE

OB SERIES



OIL LESS BUSH



Code	d	D	L	F7	m6			
OB	20	28	15					
			16					
			19					
			20					
			25					
			30					
			35					
			40					
			50					
			30			16		
	20							
	25							
	30							
	35							
	40							
	22	32	12			+0.041		
			15			+0.020		
			20					
			25					
			25			33	12	
							15	
	16							
	20							
	25							
	30							
	35							
	40							
	50							
	60							
	35	35	12					
15								
16								
20								
25								
30								
35								
40								
50								

Code	d	D	L	F7	m6						
OB	28	28	20								
			25								
			30								
			40								
			30			38	12				
							15				
	20										
	25										
	30										
	35										
	32	40	40			+0.041					
			50			+0.020					
			60								
			20								
			25								
			30								
	31.5	40	30								
			40								
			32				42	30			
								40			
								35	44	25	
										30	
	35										
	40										
	50										
	60										
	35	45	20			+0.005					
			25			+0.025					
			30								
			35								
40											
50											
60											
38	48	30									

Regd. Office : 5224, Nigam Market, G.B. Road, Delhi - 110006

Head Office : B-97/4, Naraina Industrial Area, Phase - I, New Delhi - 28 Ph.: 011 - 42709155 / 66 Fax : 011 - 45040209

Branch Office : Door No. 1/9, Rajamannar Salai, Vijayaraghavapuram, K.K. Nagar, Chennai - 600 093 Ph.: 044 - 42669808

Email : info@pbh.in

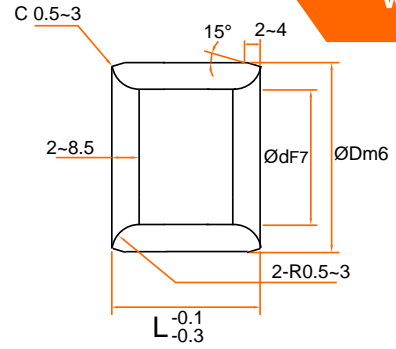
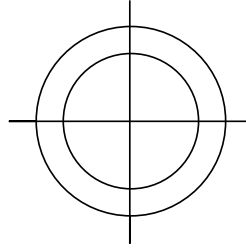
Website : www.pbh.in

# PRECISION BEARING HOUSE

OB SERIES



OIL LESS BUSH



Code	d	D	L	F7	m6
OB	38	48	40		
			20		
	40	50	25		
			30		
			35		
			40		
			50		
			60		
			70		
			80		
	45	55	25		
			30		
			35		
			40		
			50		
			60		
			30		
			35		
			40		
			50		
	50	60	30		
			35		
			40		
			50		
60					
70					
80					
40					

Code	d	D	L	F7	m6				
OB			50						
			60						
			50			62	70		
							80		
							30		
							35		
							40		
							50		
							60		
							70		
			55			70	30		
							40		
							50		
							60		
							70		
							80		
							100		
							60	74	40
									50
									60
			70						
			30						
			35						
			40						
50									
75	75	60							
		70							
		80							
		30							
		35							
		40							
		50							
		60							

Regd. Office : 5224, Nigam Market, G.B. Road, Delhi - 110006

Head Office : B-97/4, Naraina Industrial Area, Phase - I, New Delhi - 28 Ph.: 011 - 42709155 / 66 Fax : 011 - 45040209

Branch Office : Door No. 1/9, Rajamannar Salai, Vijayaraghavapuram, K.K. Nagar, Chennai - 600 093 Ph.: 044 - 42669808

Email : info@pbh.in

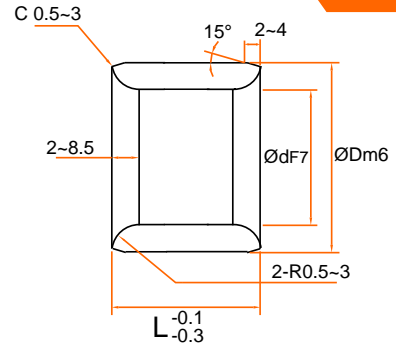
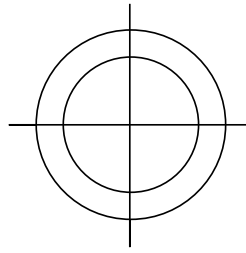
Website : www.pbh.in

# PRECISION BEARING HOUSE

OB SERIES



OIL LESS BUSH



Code	d	D	L	F7	m6		
OB	63	75	60	+0.060 +0.030	+0.030 +0.011		
			70				
			80				
	65	80	50				
			60				
			70				
	65	80	80				
			70				
			80				
	70	85	35			+0.060 +0.030	
			40				
			50				
			60				
			70				
			80				
		90	50				
			60				
			70				
			80				
			80				
			100				
	75	90	50		+0.035 +0.013		
			60				
			70				
80							
80							
100							
95		60					
		70					
		80					
		80					
		100					
		100					
80	96	40	+0.083 +0.043				
		50					
		60					
		70					
		80					
		100					
	100	40					
		50					
		50					
		60					
		60					
		60					

Code	d	D	L	F7	m6		
OB	80	100	70	+0.060 +0.030	+0.035 +0.013		
			80				
			100				
			120				
			140				
			140				
	85	110	80	+0.071 +0.036			
			30				
			50				
			60				
			70				
			80				
	90	120	60			+0.071 +0.036	
			70				
			80				
			100				
			100				
			120				
	100	130	60	+0.040 +0.015			
			70				
			80				
			100				
			100				
			120				
110	140	80	+0.083 +0.043				
		100					
		100					
		120					
		120					
		140					
120	150	80	+0.083 +0.043				
		100					
		100					
		120					
		120					
		140					
125	160	100	+0.083 +0.043				
		120					
		100					
		100					
		130					
		130					
130	170	100	+0.083 +0.043				
		100					
		130					
		100					
		150					
		150					
140	180	100	+0.083 +0.043				
		140					
		100					
		100					
		150					
		150					

Regd. Office : 5224, Nigam Market, G.B. Road, Delhi - 110006

Head Office : B-97/4, Naraina Industrial Area, Phase - I, New Delhi - 28 Ph.: 011 - 42709155 / 66 Fax : 011 - 45040209

Branch Office : Door No. 1/9, Rajamannar Salai, Vijayaraghavapuram, K.K. Nagar, Chennai - 600 093 Ph.: 044 - 42669808

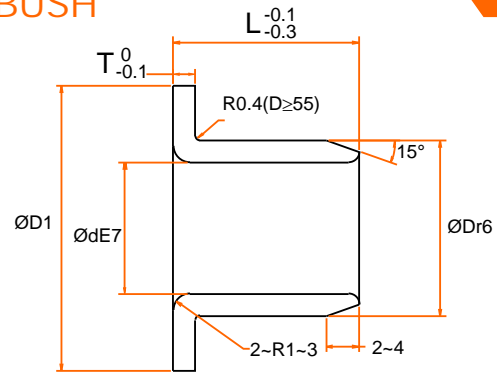
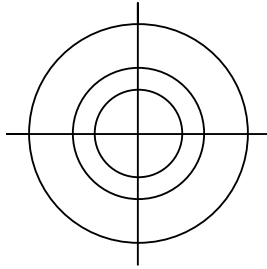
Email : info@pbh.in

Website : www.pbh.in

# PRECISION BEARING HOUSE

## OIL LESS BUSH

OBF SERIES



Code	d	D	L	d		D		D1	T
					E7		r6		
OBF	8	12	10	8	+0.040 +0.025	12	+0.034 +0.023	20	2
			15						
	10	14	12	10		14		22	
			15						
			17						
	12	18	20	12		18		25	
			25						
			30						
	13	19	15	13		19		26	
			20						
	14	20	15	14		20		27	
			20						
25									
15	21	15	15	21	28				
		20							
		25							
		30							
		35							
16	22	15	16	22	29				
		18							
		20							
		23							
		25							
		30							
18	24	20	18	24	32				
		30							
		40							
20	30	15	20	30	40				
		20							
		25							
		30							
		35							
20	30	35	20	30	40				
		40							
		45							
		50							

Regd. Office : 5224, Nigam Market, G.B. Road, Delhi - 110006

Head Office : B-97/4, Naraina Industrial Area, Phase - I, New Delhi - 28 Ph.: 011 - 42709155 / 66 Fax : 011 - 45040209

Branch Office : Door No. 1/9, Rajamannar Salai, Vijayaraghavapuram, K.K. Nagar, Chennai - 600 093 Ph.: 044 - 42669808

Email : info@pbh.in

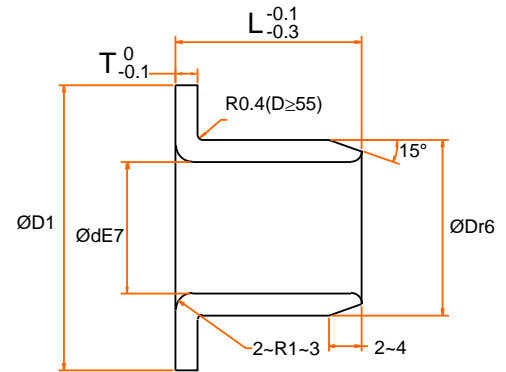
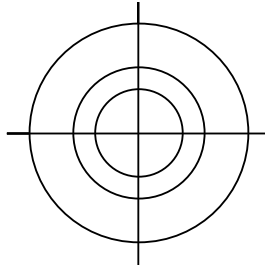
E-15

Website : www.pbh.in

# PRECISION BEARING HOUSE

## OIL LESS BUSH

### OBF SERIES



Code	d	D	L	d		D1	T
				m6	r6		
OBF	25	35	15	25	35	45	5
			20				
			25				
			30				
			35				
			40				
			50				
	30	40	20	30	40	50	
			25				
			30				
			35				
			40				
			50				
			31.5				
	35						
	40						
	50						
	35	45	20	35	45	60	
			25				
			30				
			35				
			40				
			50				
			40				
25							
30							
35							
40							
50							

Code	d	D	L	d		D1	T
				m6	r6		
OBF	45	55	30	45	55	70	5
			35				
			40				
			50				
			60				
	50	60	30	50	60	75	
			35				
			40				
	55	65	40	55	65	80	
			60				
	60	75	40	60	75	90	
			50				
			80				
	63	85	67.5	63	85	105	
70							
80							
75	90	60	75	90	110		
		80					
		100					
80	100	60	80	100	120		
		80					
		100					
90	110	60	90	110	103		
		80					
		100					
100	120	80	100	120	150		
		100					
120	140	80	120	140	170		
		100					

Regd. Office : 5224, Nigam Market, G.B. Road, Delhi - 110006

Head Office : B-97/4, Naraina Industrial Area, Phase - I, New Delhi - 28 Ph.: 011 - 42709155 / 66 Fax : 011 - 45040209

Branch Office : Door No. 1/9, Rajamannar Salai, Vijayaraghavapuram, K.K. Nagar, Chennai - 600 093 Ph.: 044 - 42669808

Email : info@pbh.in

E-16

Website : www.pbh.in

## SOLUTIONS FOR INDUSTRIAL AUTOMATION

- Linear Guides
- Ball Screw & Lead Screw
- Ball Screw Support Unit
- Coupling
- Linear Motion Bearing
- Shafts (Hardened & Ground)
- Pillow Block Bearing Unit
- Precision Lock Nut & Power Lock
- Timing Belt & Pulley
- Actuators, X-Y Tables
- Maxima Work Table & Conveyor
- Stepper Motors, Drivers
- AC Servo Motors & Drive
- Motion & Controllers
- Rotary Indexing Tables
- Cable Drag Chain (Robochain)
- Aluminium Profile & Accessories
- Leveling Foot Mount & Autocaster



Maxima Conveyor



Maxima Work Table