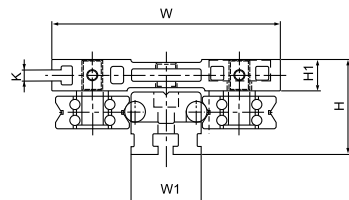
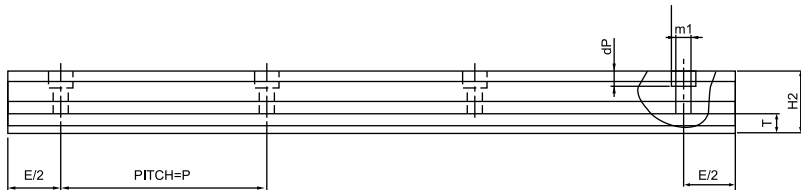
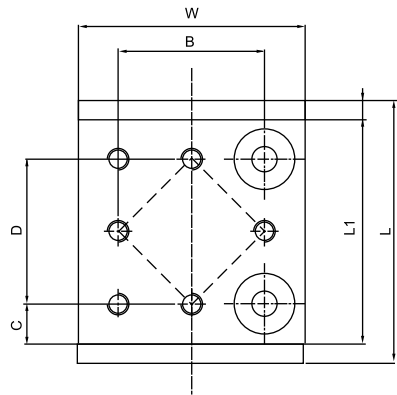
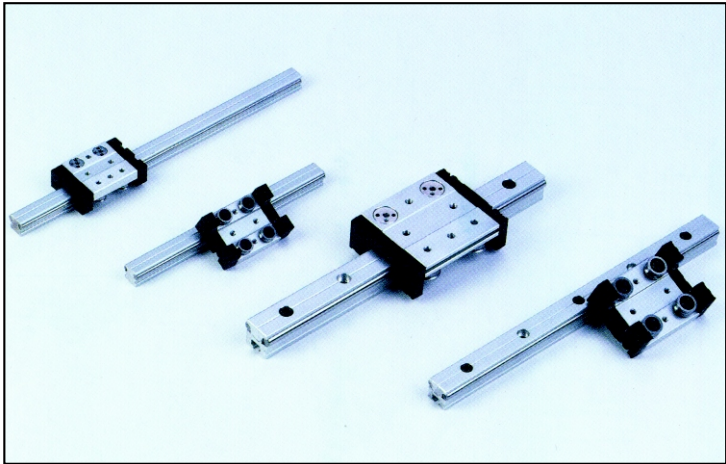
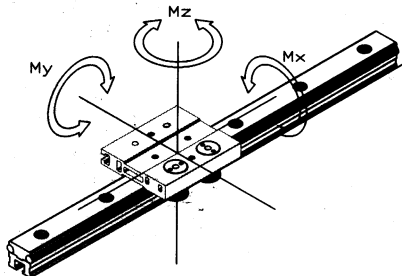


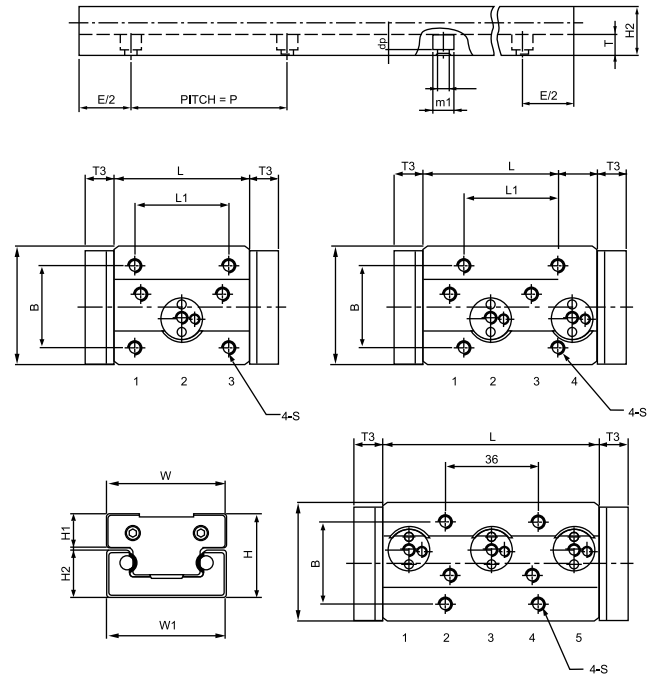
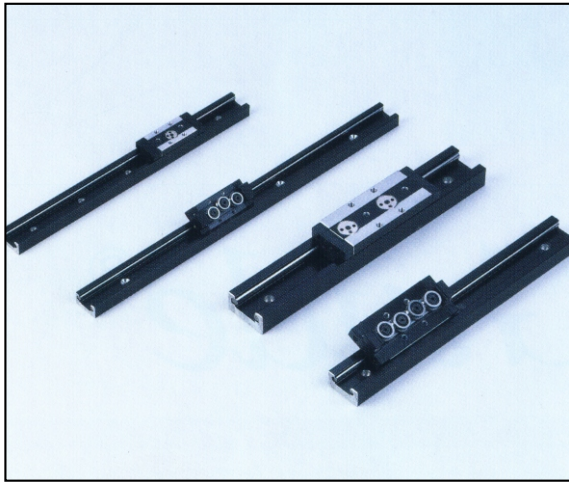
# OSG TYPE



Whole		Rail OSGR																			Block OSGB							
Type	W	H	W1	H2	T	Shaft Weight (g/m)	m	m1	dp	P	W	H1	L	B	L1	S	T3	C	D	K	Basic Dynamic safe working Load (N)		Dynamic moment (N-m)			Weight (g/ea)	Type	
																					Yo	Zo	Mxo	Myo	Mzo			
OSG-20	60	32	20	20.25	11.45	6	1230	5.5	9.5	5.5	60	60	12	80	38	60	M5	11	11	38	4.3	700	660	23.03	33.41	35.47	120	OSG-20
OSG-25	80	37	25	24.75	13.93	8	2015	6.6	11	6.5	60	80	12	100	51	80	M6	11	14.5	51	4.2	1400	1000	62.76	68	95.2	240	OSG-25
OSG-30	100	46	30	30.3	16.18	10	2987	6.6	11	6.5	60	100	16.5	120	61	100	M8	11	19.5	61	5.2	2100	1800	105.98	147.89	172.54	520	OSG-30
OSG-40	130	55	40	36.2	18.7	12	5216	9	14	9	60	130	18	150	84	130	M12	11	23	84	6.2	4000	3400	280.64	380	448	1130	OSG-40

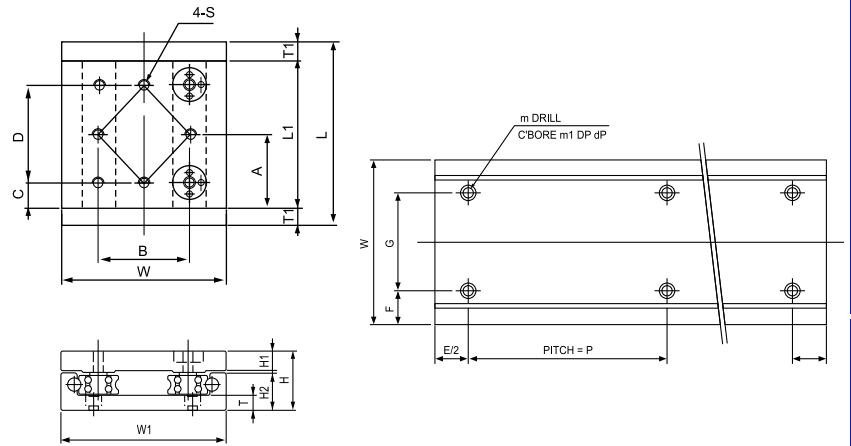
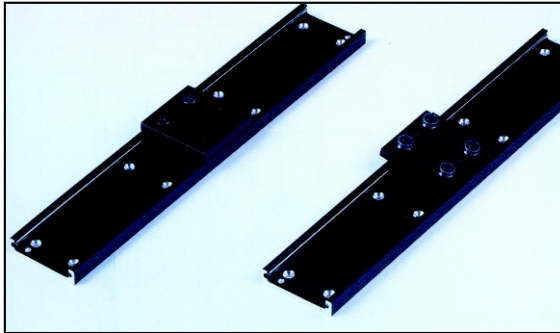


# SG TYPE



SG	Whole System		Rail SGR							Block SGB											SG							
SGR SGB	H	W	W1	H2	dP	P	Shaft	Weight (g/m)	T	m1	m	W	H1	L	B	L1	S	T3	Bearing q'ty	Eccentric Position	Basic Dynamic safe working Load (N)		Dynamic moment (N-m)			Weight (g/ea)	SGR SGB	
																					Yo	Zo	Mxo	Myo	Mzo			
10	-3 -4 -5	23	28	28	14	3.3	60	5	1,051	4.5	6.5	3.4	28	8	47 63 78	21	18	M4	3 4 5	2 2,4 2,4,5	343	322	6.4	6.8	7.1	70	10	-3 -4 -5
15N	-3 -4 -5	32	44	38	18.5	6	120	6	1,651	8	8	4.5	44	12	60 80 100	26	26	M5	3 4 5	2 2,4 2,4,5	490 700 980	460 660 920	7.4 13.2 20.3	7.8 14 37	10.2 14.5 39	105 140 170	15N	-3 -4 -5
15	-3 -4 -5	32	46	46	18.5	6	120	6	1,784	8	8	4.5	46	12	52 68 84	32	36	M5	3 4 5	2 2,4 1,3,5	490 700 980	460 660 920	9.2 19.8 27.7	9.8 21.1 44.3	13.8 22.4 47	110 145 185	15	-3 -4 -5
20N	-3 -4 -5	36	47	47	22.5	6	120	8	2,427	9	9.5	5.5	47	12	80 106 132	38	30	M6	3 4 5	2 2,4 2,4,5	820 1400 1960	700 1000 1400	15.4 42 58.8	21.5 52 92.4	29.4 61.6 129	195 265 325	20N	-3 -4 -5
20	-3 -4 -5	36	60	60	22.5	6	120	8	2,744	9	9.5	5.5	90	12	72 94 116	50	40	M6	3 4 5	2 2,4 2,4,5	820 1400 1960	700 1000 1400	18.2 44 84.2	25.4 60.2 109.2	42.1 72.8 152.8	210 280 350	20	-3 -4 -5
25	-3 -4 -5	44	70	69	26	7	120	10	3,873	10	11	6.6	70	16.65	100 133 166	57	45	M8	3 4 5	2 2,4 2,4,5	1470 2100 2940	1260 1800 2520	41.58 96.6 135	48.51 118.8 249.48	67.62 138.6 291.06	460 615 775	25	-3 -4 -5
35	-3 -4 -5	55	100	90	35	8.5	160	12	6,442	12	14	9	100	18	140 185 230	82	62	M10	3 4 5	2 2,4 2,4,5	2800 4000 5600	2380 3400 4760	126 228 319.2	135 360 756	159.6 478 758	1100 1450 1835	35	-3 -4 -5

# SG WIDE TYPE



SGW	Whole System		Rail SGWR							Block SGB											SGW						
	H	W	W1	H2	T	P	m	m1	dp	Weight (g/m)	L	L1	A	B	C	D	G	H1	S	T1		Basic Dynamic safe working Load (N)		Dynamic moment (N-m)			Weight (g/ea)
																					Yo	Zo	Mxo	Myo	Mzo		
10	23	67	67	14	4.5	60	3.4	6.5	3.3	1,051	84	64	32	42	14.5	35	38	8	M4	10	360	340	7.8	7.0	8.2	70	10
15	32	88	88	18.5	8	120	4.5	8	6	1,784	102	80	40	52	15	50	48	12	M5	11	700	660	19.8	21.1	24.6	120	15
20	36	100	100	22.5	9	120	5.5	9.5	6	2,744	112	90	45	56	15	60	60	12	M6	11	1000	1400	60.2	61.6	67.8	240	20
25	44	120	120	26	10	120	6.6	11	7	3,873	122	100	50	60	20	60	70	16.5	M8	11	1800	2100	96.9	138.6	130.7	520	25